

The Villages of Savannah® - Chatham Village in Brandywine



6407 Chatham Park Drive, Brandywine, MD, 20613

Model: WINDSOR 1402

Beds: 4.0

Baths: 2.5

Series: Manor

SQ FT: 3,103

Homesite: 10B

Availability: Immediate Delivery

www.MidAtlanticBuilders.com

Buy Now for \$459,990*

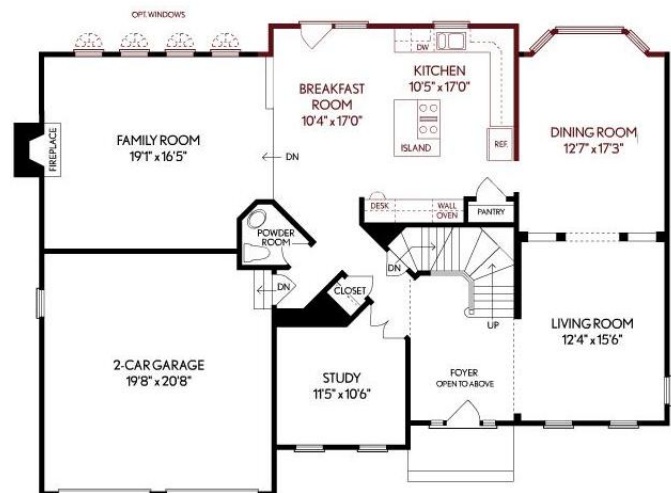
Up to 5% Towards Closing Costs

Includes \$65,000 in Free Options

Home Features

- * Appraised for \$530,000
- * Two-Car Front-Entry Garage
- * Finished Lower Level Rec Room with Full Bath
- * 9' First and Floor Ceilings
- * Family Room with Upgraded Wall of Windows and 42" Gas Fireplace
- * 2'7" Rear Expanded Family Gourmet Kitchen w/Large Work Island and Stainless Steel Appliances
- * Upgrade Granite Countertops and Maple Square Cabinets
- * Owners Suite Sitting Room
- * Large Double Walk-in Closet
- * Kohler Plumbing Fixtures Throughout
- * Upgrade Ceramic floor for Owners Suite Bath Shower, Tub and Floor
- * Owner's Suite Spa Bath with Curved Glass Block Shower Enclosure and Cascading Glass Block Window of Soaking Tub, Double Vanity with Cultured Marble Vanity Top

For more information contact:
Marc Shutta, (301) 782-9036
mshutta@MidAtlanticBuilders.com



Luxury. Style. Design. *Personalized.*



*Programs and incentives subject to change without notice and available only when lender and title company from builder's approved list are used. Maximum package value varies by community and houseplan. Builder's assistance is not to exceed maximum package value. Not all buyers qualify for program savings. Qualifications to be determined by Mid-Atlantic Builders' preferred lender(s) prior to contract ratification. See a Mid-Atlantic Builders Sales Counselor for specific program details as some restrictions apply. Elevations and floorplans are for illustrative purpose only and may not depict actual options in the home. The name Mid-Atlantic Builders and the Mid-Atlantic Builders logo are registered service marks of Mid-Atlantic Builders. Effective: 7-25-11 MHBR#5680

